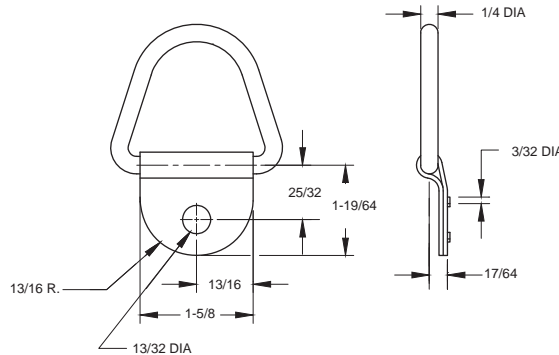


### 300-C Ring & Clamp

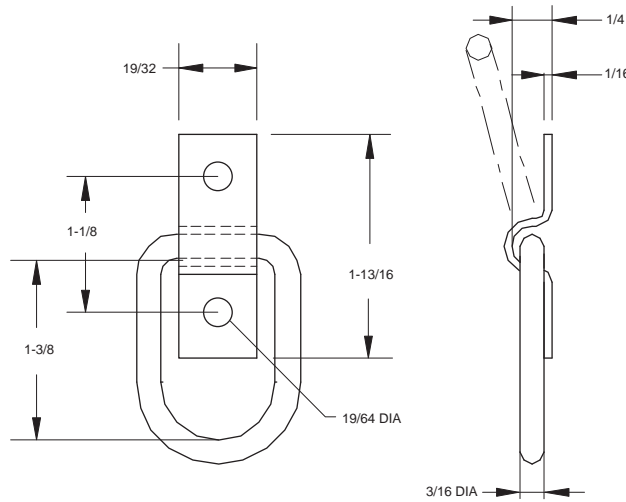
Steel construction/zinc finish  
Used in the 300-F flush mount assembly  
1,500 lbs break strength capacity\*  
500 lbs working load limit\*



ZN-243426

### 300-L Ring & Clamp

Steel construction/zinc finish  
Butt welded ring  
Available with cup as special order item  
1,500 lbs break strength capacity\*  
500 lbs working load limit\*



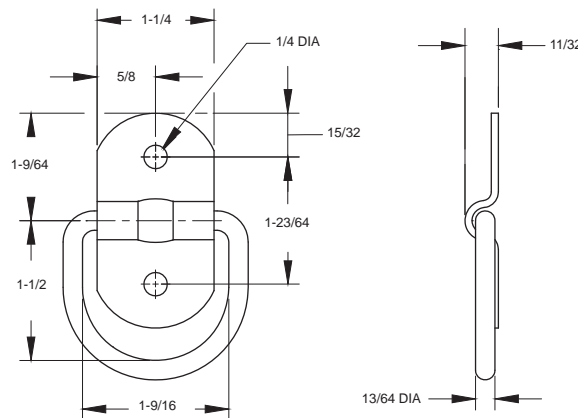
BRACKET  
ZN-223524



RING  
ZN-223523

### 300-S Ring & Clamp

Steel construction/zinc finish  
1/4" Mounting holes  
Butt welded ring  
1,500 lbs break strength capacity\*  
500 lbs working load limit\*



S300SXXXZNXX

\* **Rating Parameters:** To provide a reliability factor to manufacturers for the differences between static testing and dynamic (real world) loading on load securement components, rating parameters have been established. Breaking Strength Capacity is the maximum load that an assembly will withstand before failing. Working Load limit (WLL) is defined as the maximum load that a component or assembly should receive during regular use. WLL is typically calculated as one-third (1/3) of Breaking Strength Capacity. (CVSA/FHWA out of service criteria) A working knowledge of the breaking strength capacity & working load limit (WLL) in securement assemblies is necessary to properly securing a load.