

## 30 Series Grab Handle

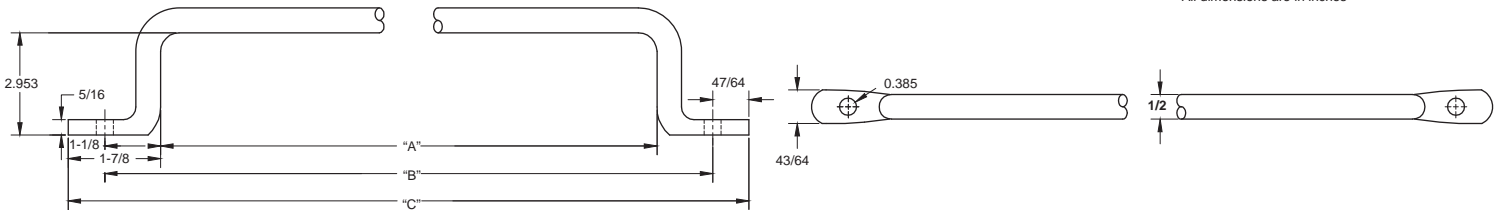
- Steel construction/zinc finish
- 1/2" DIA
- Available with/without holes
- Available with two or four mounting holes
- Available in aluminum
- Available with chrome finish
- Available with plastisol coating
- Available in 6, 8, 10, 12 & 14" lengths
- Special lengths available please inquire



S30-10XXZN01

| Description | "A" | "B"    | "C"    |
|-------------|-----|--------|--------|
| 30-6        | 6   | 8-1/4  | 9-5/8  |
| 30-8        | 8   | 10-1/4 | 11-5/8 |
| 30-10       | 10  | 12-1/4 | 13-5/8 |
| 30-12       | 12  | 14-1/4 | 15-5/8 |
| 30-14       | 14  | 16-1/4 | 17-5/8 |

All dimensions are in inches

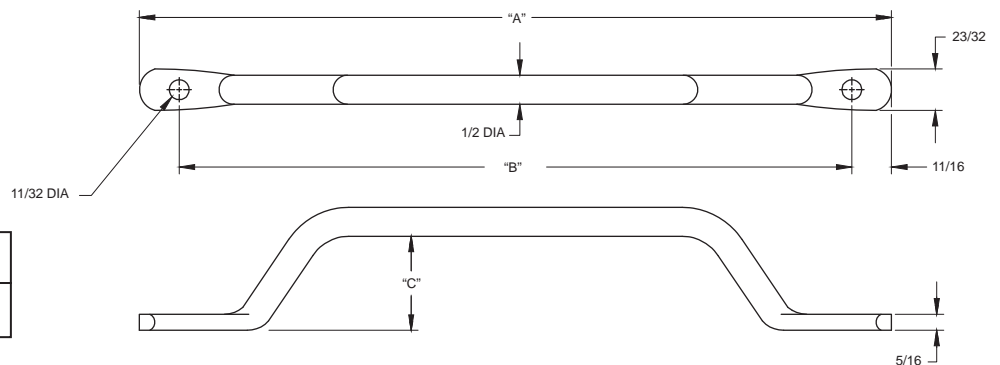


## 31 Series Grab Handle

- 1/2" DIA
- Available in steel construction/zinc finish
- Available in stainless steel
- Available in aluminum
- Available with/without holes
- Available with countersunk holes
- Available with plastisol coating
- Inquire about optional hole patterns



F31-8XXCR2H



| Description | "A" | "B"    | "C"     |
|-------------|-----|--------|---------|
| 31-6        | 11  | 9 5/8  | 1 11/16 |
| 31-8        | 13  | 11 5/8 | 1 5/8   |

All dimensions are in inches