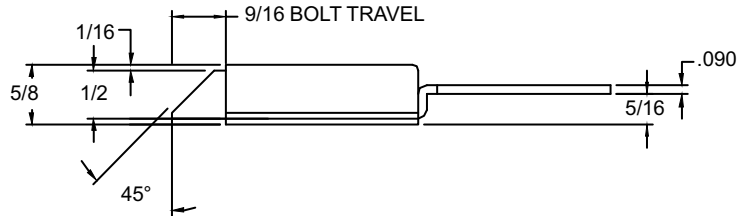
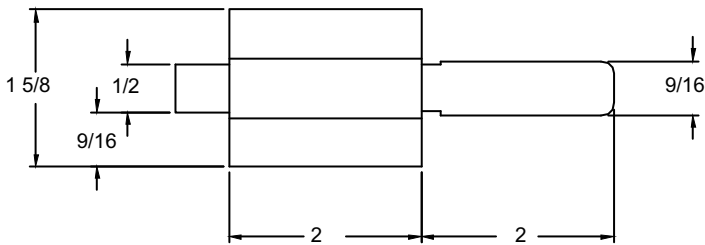




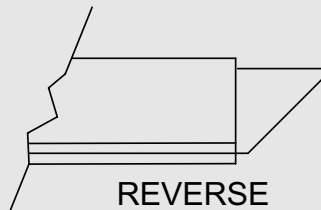
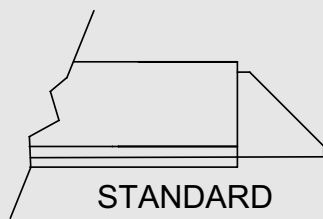
S97LDXFXXX02

97-LD SERIES FLUSH BOLT

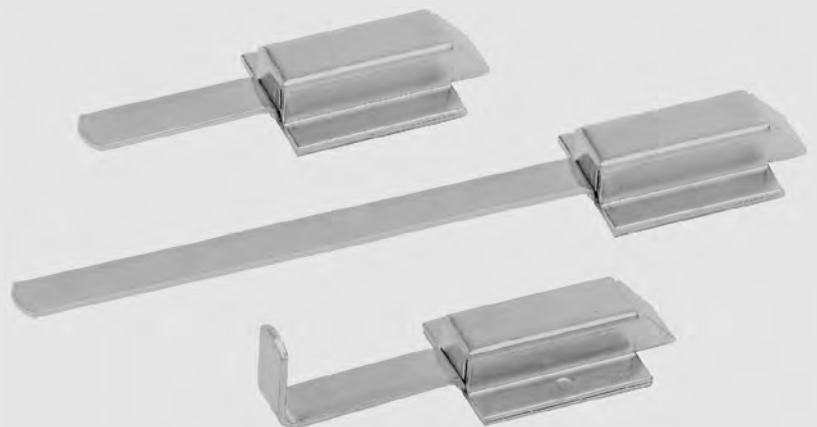
- Steel construction/zinc finish
- Beveled bolt design
- ✓ Available with standard or reverse bolt
- ✓ Available with /without mounting holes
- ✓ Available with optional finger pull designs
- ✓ Available with optional spring tensions 4#, 9#, 14#



BOLT DIRECTION



OPTIONAL FINGER PULL DESIGNS



ISO 9001:2000
QUALITY SYSTEM



Approvals
Quality System Registration

**A. L. HANSEN
MANUFACTURING**

701 Pershing Rd. Waukegan, Illinois 60085 U.S.A. Phone: (847)244-8900 Fax: (847)244-7222 WWW.ALHANSEN.COM